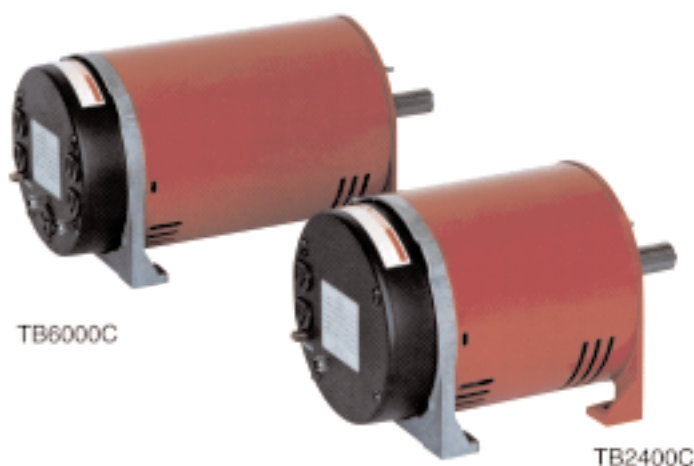




BRUSHLESS TWO BEARING GENERATOR



Industrial designed, rugged, lightweight, brushless, two bearing generator. Epoxy baked rotors, oversized diode, cast iron drive-side end bracket and double sealed permanent bearings all combine to insure maximum performance and life. Units are designed to rotate either direction without changing the wiring, and are rated at unity power factor. Units require approximately 2 HP input for each 1000 watts output from the generator. Each unit is tested at the factory to insure its performance and reliability.

Model Number	TB2400C	TB4000C*	TB6000C*	TB7200C*
Watts	2400 watts	4000 watts	6000 watts	7200 watts
Operating Speed	3600 rpm	3600 rpm	3600 rpm	3600 rpm
Brushless	Yes	Yes	Yes	Yes
Motor Starting Capability	¼ hp	1½ hp	3 hp	5 hp
Circuit Breakers	1-20 amp	2-20 amp	2-25 amp	2-30 amp
Receptacle 120V (NEMA 5-15R)	2-15 amp	4-15 amp	4-15 amp	Junction Box
Receptacle 240V (NEMA 6-20R)	N/A	1-20 amp	1-20 amp	Junction Box
Volts @ 60 HZ	120	120/240	120/240	120/240
Rated A.C. Amps	20	33.3/16.7	50/25	60/30
Length	14.25 in.	15.13 in.	17.75 in.	20.13 in.
Width	8.5 in.	8.5 in.	8.5 in.	8.5 in.
Height	8.94 in.	8.94 in.	8.94 in.	11.75 in.
Weight	49 lbs.	67 lbs.	86 lbs.	114 lbs.
Shaft Diameter	1.125 in.	1.125 in.	1.125 in.	1.125 in.
Warranty	1 year	1 year	1 year	1 year

*These units can be reconnected for 120 volt full power. Consult factory for details.



TWO-BEARING GENERATORS



Industrial designed, rugged, two bearing generator. Double baked armatures, oversize diode and double sealed permanent bearings, all combine to insure maximum performance and life. Units are designed to rotate either direction without changing the wiring, and are rated at unity power factor. Units require approximately 2 HP input for each 1000 watts output from the generator. Each unit is tested at the factory to insure its performance and reliability.

Model Number	2FSM2PC-1	4KS2GC-3	8KS2GC-3
Watts	2000 watts	4000 watts	8000 watts
Operating Speed	3600 rpm	3600 rpm	3600 rpm
Motor Starting Capability	1/2 hp	1/2 hp	3 hp
Receptacle 120V (NEMA 5-15)	2-15 amp	2-15 amp	2-15 amp
Receptacle 240V (NEMA 6-15R)	N/A	2-15 amp	2-15 amp
Receptacle 230V (NEMA 6-50R)	N/A	1-50 amp	1-50 amp
Volts @ 60 HZ	120	120/240	120/240
Rated A.C. Amps	16.7	33.3/16.7	66.6/33.3
Length	15 in.	14 in.	19 in.
Width	6 1/2 in.	12 in.	12 in.
Height	6 1/4 in.	17 1/4 in.	17 1/4 in.
Weight	59 lbs.	108 lbs.	175 lbs.
Shaft Diameter	5/8 in.	3/4 in.	1-1/4 in.
A.C. Voltmeter	N/A	Standard	Standard
Warranty	1 year	1 year	1 year

WINCO[®]
Quality Since 1933

WINCO, Inc.
225 South Cordova Ave.
LeCenter, MN 56057
PHONE: (507) 357-6821
FAX: (507) 357-4857
SALES (E. of Mississippi River): (800) 733-2112
SALES (W. of Mississippi River & Canada): (800) 324-8174